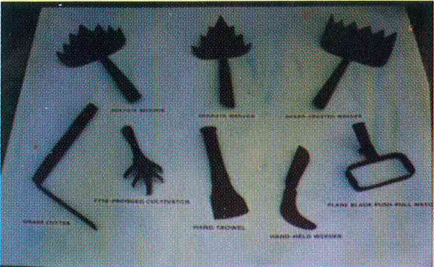
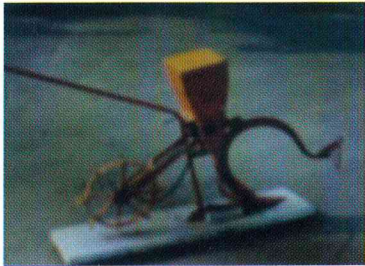


OTHER EQUIPMENT BEING PROMOTED



SOIL
TILLING
HAND
TOOLS

ANIMAL-
DRAWN
SEED AND
FERTI-LIZER
APPLICATOR



HUMAN –
DRAWN
DRUM
SEEDER

TAPAK-
TAPAK
PUMP



PEDAL-
TYPE/
FOOT
OPERA-
TED
CASSAVA
CHIPPER

MANUALLY
OPERATED
CORN
SHELLER



MANUALLY-
OPERATED
PEANUT
SHELLER



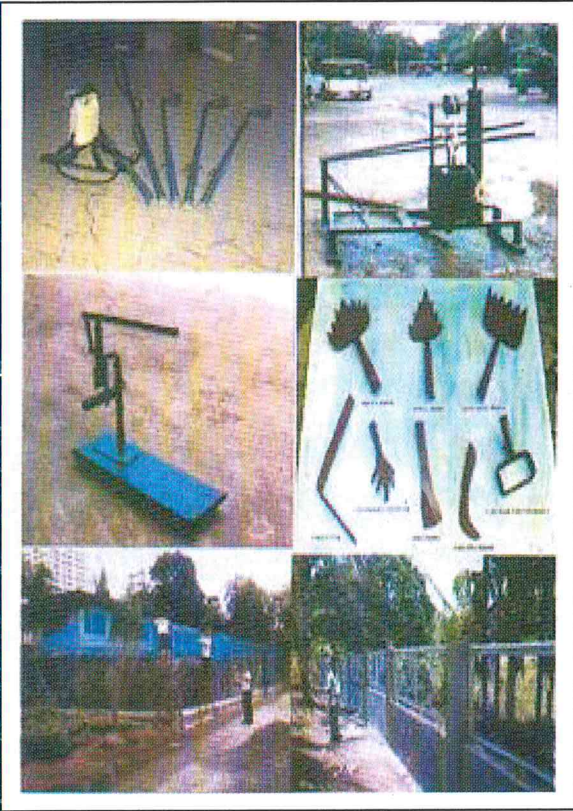
For more information, contact:
The Agricultural Engineering Division
Bureau of Plant Industry
No. 692 San Andres, Malate, Manila
Tel/Fax No. 523-6757
524-0801



Republic of the Philippines
Department of Agriculture
BUREAU OF PLANT INDUSTRY
Manila



AGRICULTURAL
ENGINEERING DIVISION



*Empowering the Farmers
through the Development and Adoption
of Affordable and Appropriate Agricultural
Mechanization Technologies*

INTRODUCTION

Agricultural production involves various farm activities that necessitate the application of labor, power and materials. The farmer uses technology from land preparation to planting, and from harvesting to post-production. Indeed, appropriate technology gives the farmers the opportunity of gaining more, either by increased production or reduced losses or reduced cost of labor.

The BPI-AED recognizes that agriculture and its activities are situation-specific and all levels of mechanization technology: hand tool technology, draft animal technology, and mechanized technology have their respective place in the different agricultural development situations. Thus, the AED with its resources, linkages with other agricultural development institutions and its technical extension/promotion activity continues to work towards developing appropriate and affordable farm technologies which farmers can use with their limited sources and simple standard of living.

MAIN FUNCTION

Develop implements, equipment and structures for the production to post-production of agricultural crops.

SERVICES OFFERED

1. Design and modification of farm tools and implements for specific local conditions;
2. Fabrication of working prototype of implements and pilot testing of equipment;
3. Design and development of farm structures and related facilities such as laboratories, greenhouses, and trickle irrigation systems;
4. Maintenance of office and service buildings and other structures of BPI and its Crop centers;
5. Cost estimating, engineering planning and technical supervision of maintenance (repair, rehabilitation or renovation) or construction of farm structures and BPI buildings and offices;
6. Free consultation on agricultural engineering concerns such as specifying farm equipment, list of farm equipment manufacturers and dealers, design and cost estimating of greenhouses, and hydroponics systems;
7. Free leaflets/flyers on farm equipment being Promoted.

TECHNOLOGIES DEVELOPED

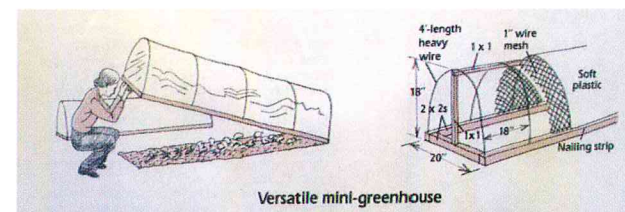
1. Small Hand Tools and Implements for Land Preparation and Crop Maintenance



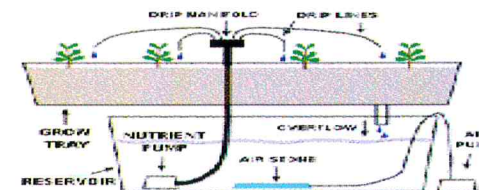
2. Pole-type Fruit Harvester



3. Low-cost Mini Greenhouse for Vegetables



4. Small-scale hydroponics system



5. Water Pumps (axial flow and treadle).

